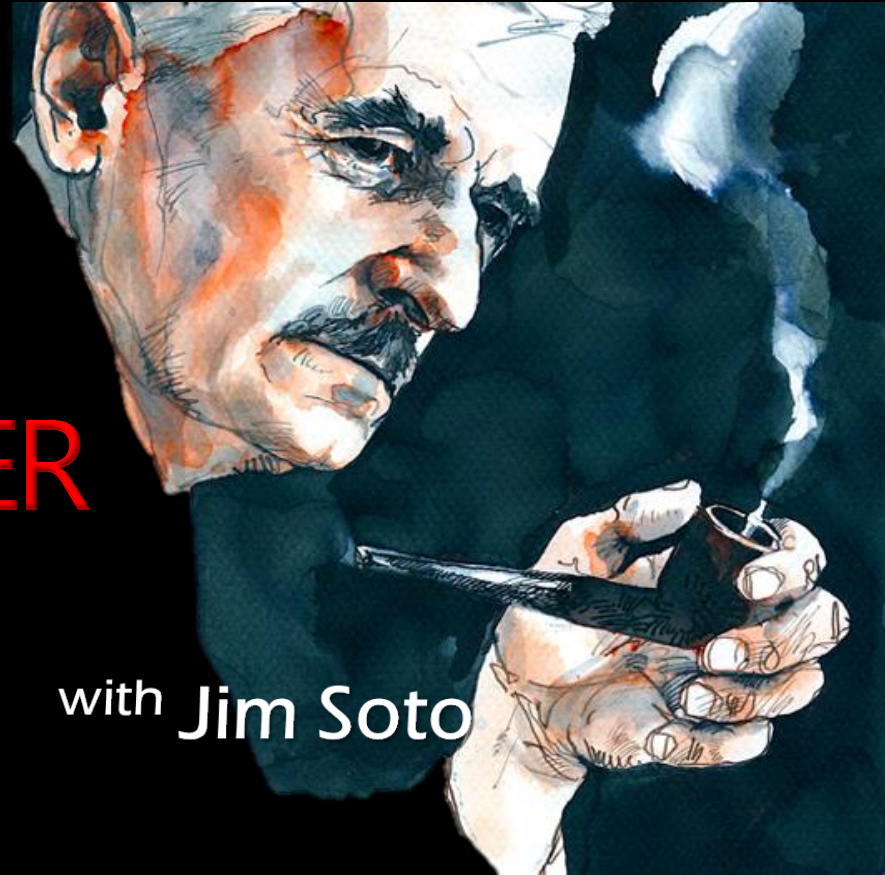


UNIT 6 Hard Times  
Depression and World War II 1929–1945

A DEEN school  
**FROEBEL**  
BILINGUAL SCHOOL  
Home of the Space Generation

Author Focus:  
**WILLIAM FAULKNER**



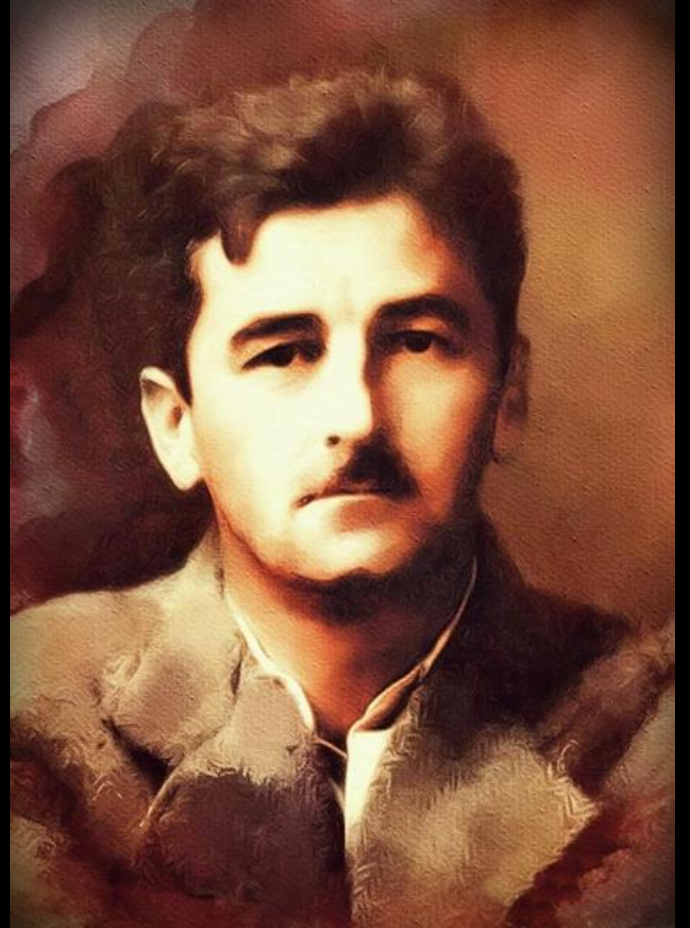
with **Jim Soto**

## **SPEAK YOUR MIND**

If you were to create a mythical setting based on where you live, what would it be like? Describe what the houses would look like, how the people would look and act, and so on.

Take a minute to consider, answer and explain your choices in your notebook.

**William Faulkner** was an American writer born in 1897 in New Albany, Mississippi. He is considered one of the most important and influential writers of the 20th century, known for his experimental writing style and complex narratives that often explore the social and racial issues of the American South.



Faulkner began his career as a poet but is most famous for his novels, including "The Sound and the Fury," "As I Lay Dying," and "Absalom, Absalom!" He won the Nobel Prize in Literature in 1949 for his "powerful and artistically unique contribution to the modern American novel." Faulkner died in 1962, leaving behind a rich legacy of literary works amongst the best in American literature.



## A ROSE FOR EMILY

First was published in 1930, early in Faulkner's career, and it became one of his most famous short stories. The setting is the home of an aging spinster, Miss Emily Grierson. Like Miss Emily, her home is decaying but refuses to fall. It protects her until the end from the prying eyes of Jefferson, Mississippi, the small-town Southern community in which she has lived her entire life.



## DARL, from AS I LAY DYING

Faulkner's novel *As I Lay Dying*, published in 1930, is an great example of his use of new narrative structures—specifically, **multiple points of view** and the **inner psychological voices** of the characters. He tells the darkly comic tale of the death of Addie Bundren, the matriarch of the Bundren family, through the eyes of each family member, including Addie herself. As the novel begins, Addie, a farm woman, is dying. During the course of the book, her husband, Anse; her children, Cash, Darl, Jewel, Vardaman and Dewey Dell; and various neighbors reveal their relationship with Addie. The excerpt that follows is from the perspective of her son Darl.

# LITERARY ELEMENTS



## Setting

It is an element which includes the historical moment in time and geographic location in which a story takes place, and provides the main backdrop and mood for a story. Social conditions, historical time, geographical locations, weather, immediate surroundings, and timing are all different aspects of setting.



## Conflict

Is a struggle between two forces. In an external conflict, the main character struggles against another character, forces of nature, society, or fate. In an internal conflict, the main character struggles against some element within himself or herself.



# GOTHIC COMEBACK

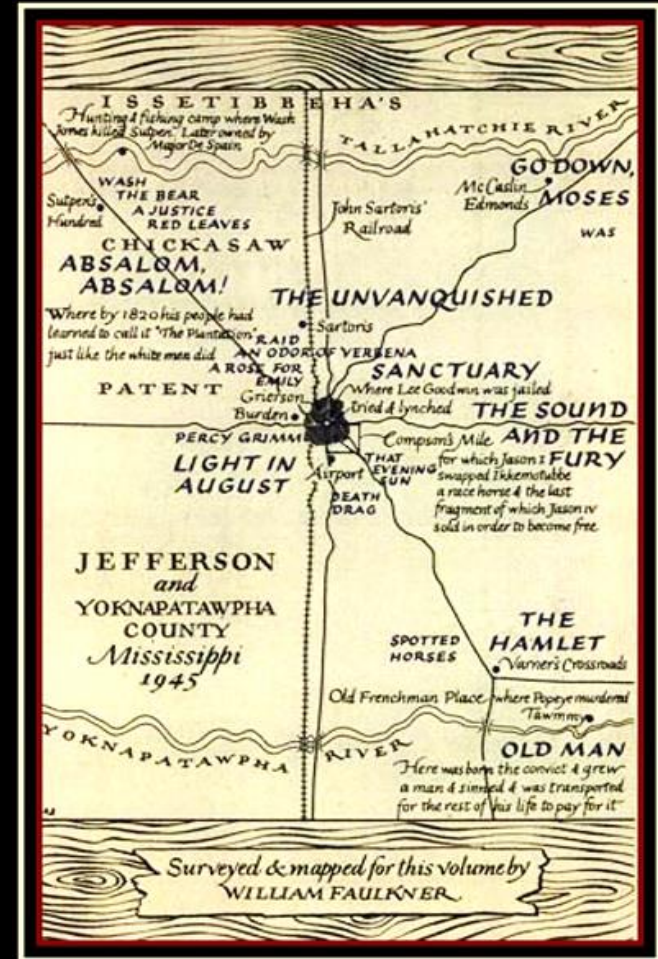
The large and ornate but disintegrating mansion In “A Rose for Emily,” is a typical setting for Gothic fiction, a type of writing that Faulkner helped develop into a uniquely Southern Gothic tradition. It is characterized by a murky atmosphere of horror and gloom and grotesque, mysterious, and violent incidents.

# RACIAL SLURS WARNING

Be aware that Faulkner's writing sometimes contains racial slurs. He considered it important to portray the South as realistically as possible, including the prevalence and effects of racial segregation and discrimination.



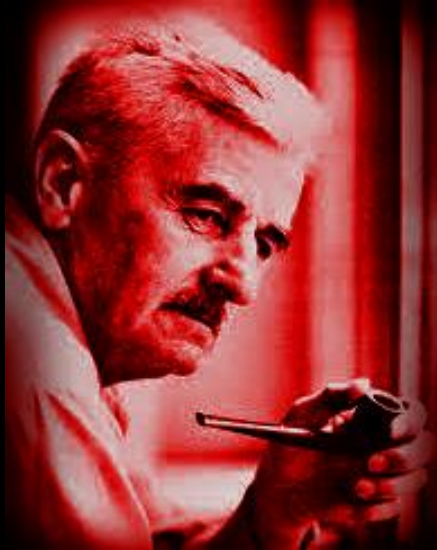
By setting many of his novels and stories in the mythical Yoknapatawpha County, Faulkner was able to create a rich fabric of community and culture. As you read "A Rose for Emily" and "Darl," record the details provided about the setting and consider what they reveal about the characters. In addition, identify the types of conflict in each selection and trace how they are resolved.



# ASSESSMENT

After reading pages 515-531 in your book, complete the activities:

1. REFER TO TEXT &
2. REASON WITH TEXT
3. & ANALYZE LITERATURE
  - **Setting and Conflict** - In "A Rose for Emily," review the setting in the scene when the door to the locked bedroom is broken down. What probably occurred on that night 40 years before, and what might have occurred since? In "Darl," how does the setting indicate the family's situation? Use details from the text to support your answers.
  - Describe the external and internal conflicts in "A Rose for Emily" and "Darl." Which type of conflict seems more difficult to overcome: external or internal? Analyze how the character's motivations and behaviors influence the plot and theme.



**Jim Soto © 2023**