

UNIT 6 Journeys / Visions of the Future
Independent Reading

A STEM school

FROEBEL
BILINGUAL SCHOOL

Home of the Space Generation



**JOURNEYS: A POETRY & ESSAY
COLLECTION**

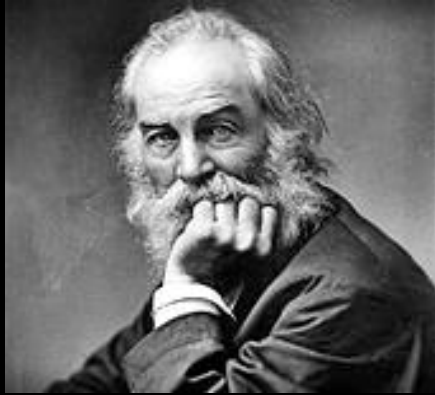
WITH
JIM SOTO

SPEAK YOUR MIND

Journeys in literature are a common theme, often used as a metaphor for personal growth and transformation. They can be physical or metaphorical, and involve obstacles that shape the character and drive the narrative forward, ultimately offering insights into the human experience and the universal quest for meaning and purpose in life.

Have you ever experienced a personal journey, either physical or metaphorical, that has had a significant impact on your life? How did this journey shape you as a person?

Take a minute to react and explain your response in the notebook.



Walt Whitman was an American poet, essayist and journalist. A humanist, he was a part of the transition between transcendentalism and realism, incorporating both views in his works. Whitman is among the most influential poets in the American canon, often called the father of free verse.

William Wordsworth was one of the founders of English Romanticism and one its most central figures and important intellects. He is remembered as a poet of spiritual speculation, a poet concerned with the human relationship to nature and a fierce advocate of using the vocabulary and speech patterns of common people in poetry.





Robert Frost is a celebrated Pulitzer prizes winning American poet. He had a great mastery of American colloquial speech and made realistic depictions of the early rural life. His great work in poetry mostly included settings from the rural life in New England in early 20th century. He used poems to examine complex existential and social themes

Maya Angelou spent much of her childhood in the segregated South. Abused and lonely as a child, Angelou turned her painful experiences into a series of memoirs including the widely read "I Know Why the Caged Bird Sings". Most of her narratives are set in Stamps, Arkansas, in the Jim Crow Era.



Song of the Open Road



"Song of the Open Road" is a poem by Walt Whitman celebrating the freedom and adventure of traveling, encouraging readers to embark on their own journey and experience the joys of exploration.

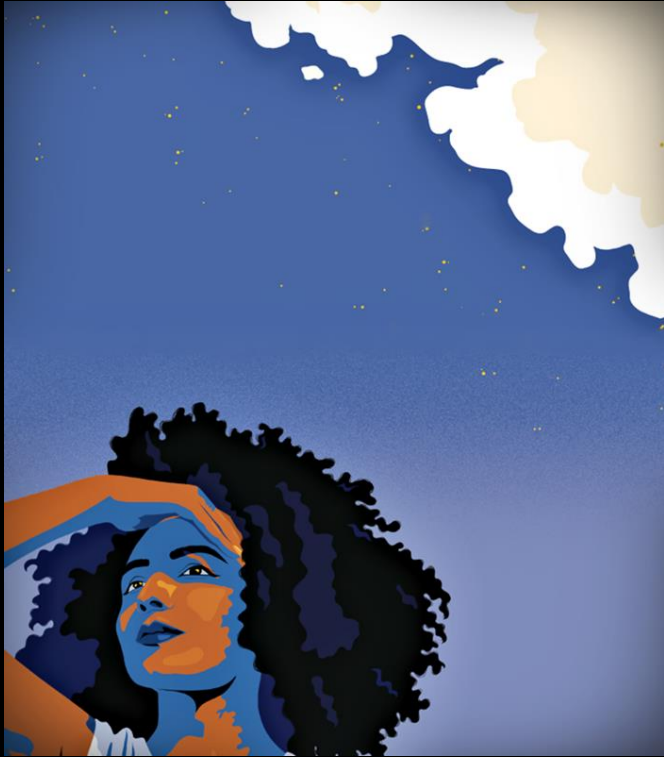
Appreciate the beauty and power of Whitman's language and imagery, and reflect on the themes of individualism, self-discovery, and the relationship between humans and nature that the poem explores.

I Wandered Lonely as a Cloud



"I Wandered Lonely as a Cloud" is a poem by William Wordsworth that describes the speaker's experience of witnessing a field of daffodils while out for a walk. The poem celebrates the beauty and power of nature and the capacity for the natural world to inspire joy and wonder in the human heart.

NEW DIRECTIONS



In Maya Angelou's essay "New Directions", she reflects on her experiences as a young woman struggling to find her place in the world. It explores themes of identity, self-discovery, and personal growth, and offers insights into the challenges and opportunities that come with forging one's own path in life. Angelou's writing encourages readers to embrace their own journeys of self-exploration and to have faith in their ability to overcome obstacles to achieve their goals.

The Road Not Taken



"The Road Not Taken", a poem by Robert Frost, reflects on the choices and opportunities that shape our lives. The poem celebrates the human capacity for free will and decision-making, but also acknowledges the uncertainty and ambiguity that often accompanies difficult choices. The poem is famous for its final lines, which suggest that the speaker's decision to take the less-traveled path has made all the difference in their life's journey.

ASSESSMENT

Think about what you have learned about using reading skills. Then complete these pages after you have read the selections:

1. Use context to define the French word *allons* in “Song of the Open Road.”

2. Determine the importance of the following detail from “I Wandered Lonely as a Cloud”:

“For oft, when on my couch I lie
In vacant or in pensive mood,
They flash upon that inward eye
Which is the bliss of solitude: . . . ”

3. Determine the importance of the following detail from “New Directions”:
“She told herself that she wasn’t a fancy cook but that she could ‘mix groceries well enough to scare hungry away and from starving a man.’”

4. Determine the author’s purpose in “The Road and the End.”

Describe and Critique: Poetry

Describe the selection from "Song of the Open Road." Complete this chart.

Title and Author

Summary

Which poetic features does the author use especially effectively?

What is your opinion of the poem? (What do you like and dislike about it? Why?)

Describe and Critique: Poetry

Describe the selection from "I Wandered Lonely as a Cloud." Complete this chart.

Title and Author

Summary

Which poetic features does the author use especially effectively?

What is your opinion of the poem? (What do you like and dislike about it? Why?)

Analyze Literature: Cause and Effect

Complete the chart by writing either a cause or effect found in “New Directions” by Maya Angelou.

Cause	Effect
	→ Annie lives alone in a one-room house with her children.
Annie doesn't want to have others care for her children.	→
Annie starts cooking meat pies in fat just before the lunch bell rings.	→
	→ Workers at the cotton gin and the lumber mill become dependent on Annie.
Workers at the cotton gin and the lumber mill become dependent on Annie.	→

Describe and Critique: Poetry

Describe the selection from "The Road Not Taken." Complete this chart.

Title and Author

Summary

Which poetic features does the author use especially effectively?

What is your opinion of the poem? (What do you like and dislike about it? Why?)



Jim Soto © 2023