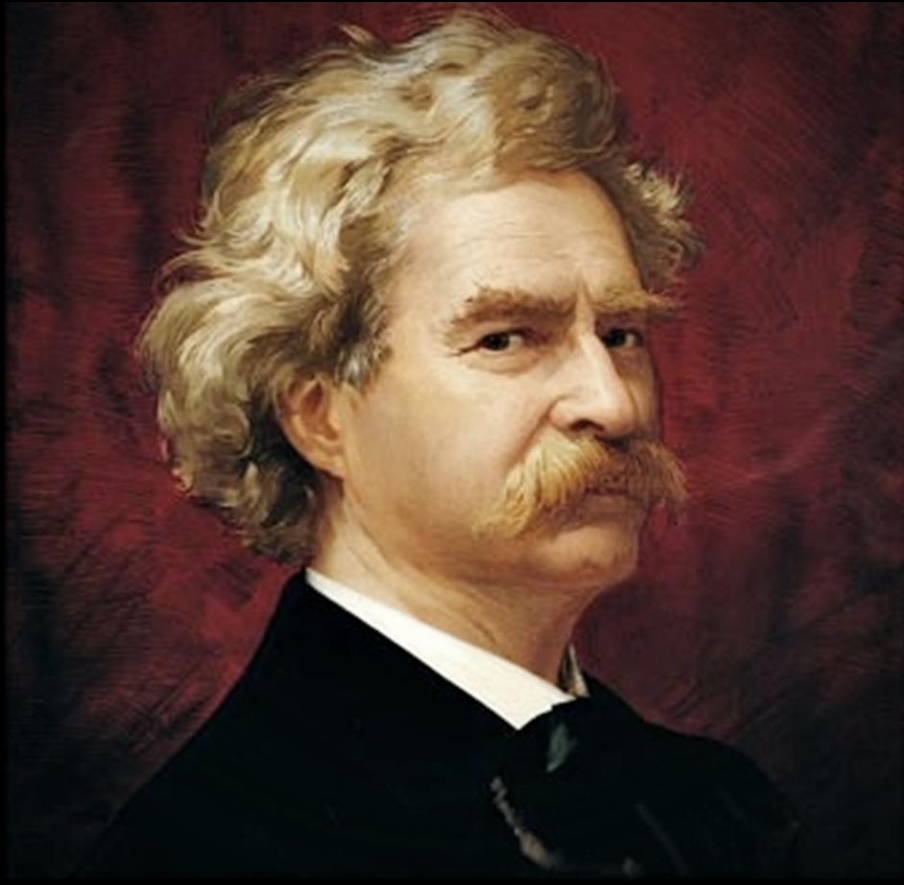


UNIT 4 Unification and Growth
Expanding Frontiers 1865–1910



AUTHOR FOCUS:
MARK
TWAIN

with **Jim Soto**

SPEAK YOUR MIND

What story or fact have you exaggerated to impress a group of listeners?

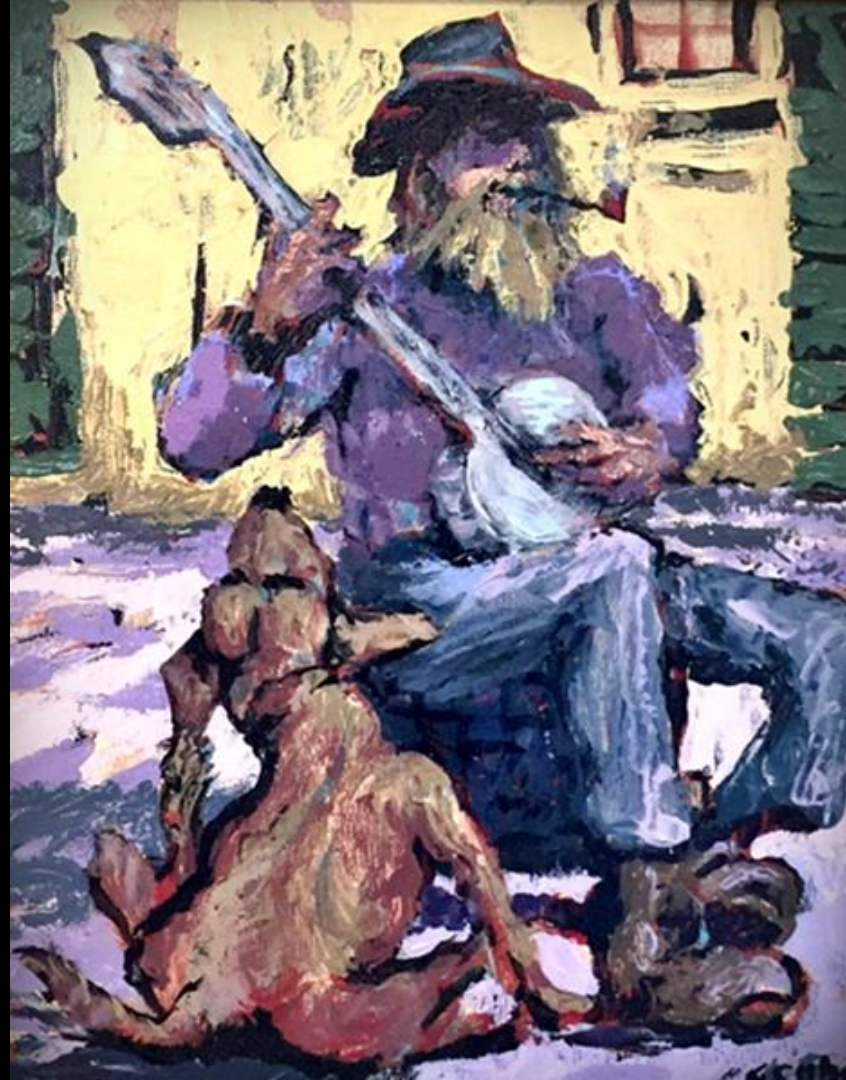
Take a minute to consider and answer the question in your notebook.

Samuel Clemens, known by his pen name **Mark Twain**, was an American writer, humorist, publisher and lecturer. William Faulkner called him "*the father of American literature*". He is best remembered as the author of "The Adventures of Tom Sawyer" and "Adventures of Huckleberry Finn". Twain is widely considered one of the greatest American writers ever.



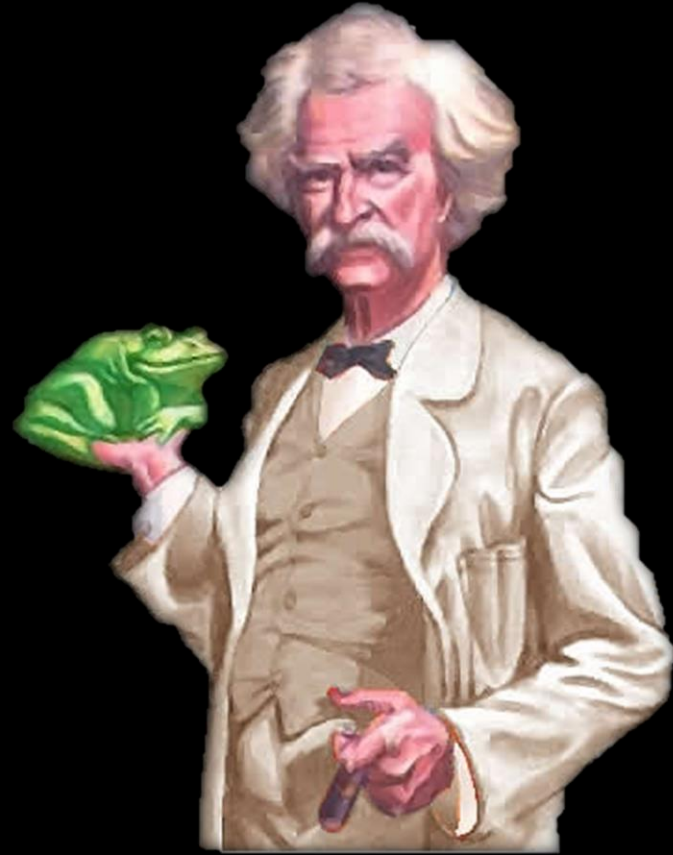
REGIONALISM

Local color or **regionalism** is fiction and poetry that focuses on the characters, dialect, customs, topography, and other features particular to a specific region. In the U.S., the perceived difference between Southerners and New Englanders could be an example of regionalism. Regionalism has been associated with poetry and short stories.



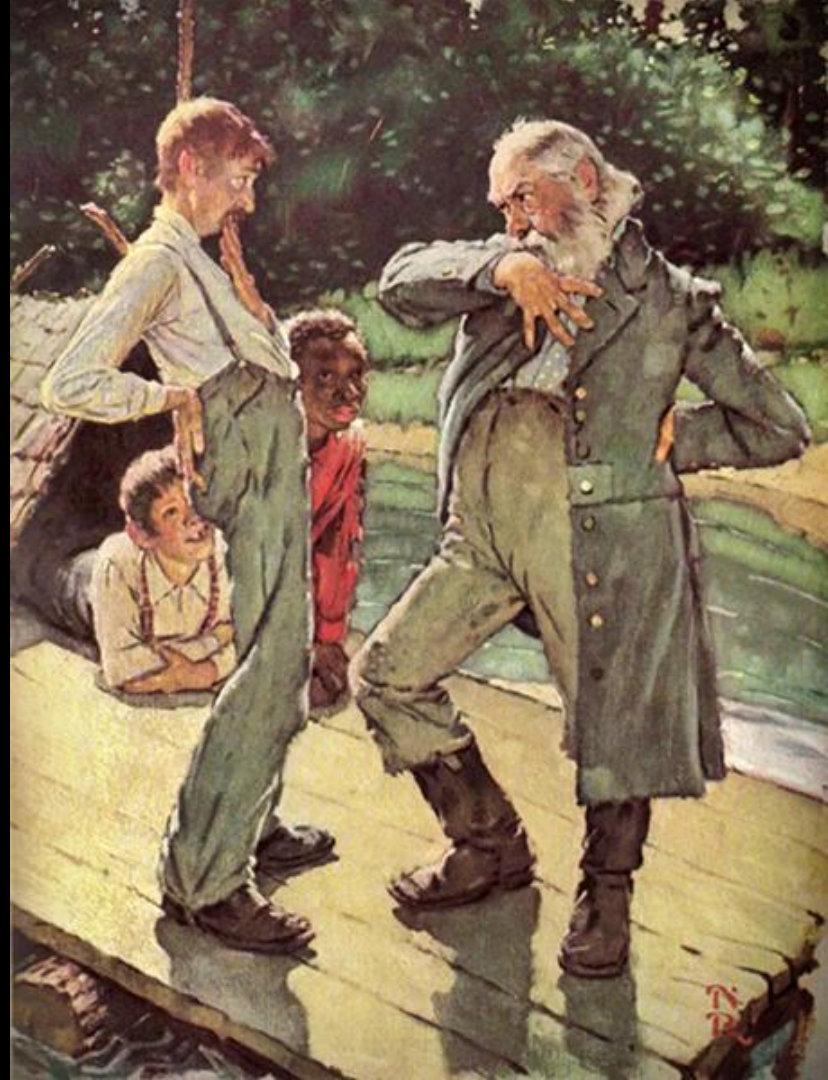
THE NOTORIOUS JUMPING FROG OF CALAVERAS COUNTY

“The Notorious Jumping Frog of Calaveras County” is Mark Twain’s retelling of a popular 19th-century tall tale, a lighthearted and humorous story that contains exaggerated, unrealistic events. Twain first became known nationally when the story was published in 1865. The story also is an outstanding example of Regionalist writing. It portrays the entertainments of simple, uneducated men living in a frontier mining camp in California.



HOW TO TELL A STORY

“How to tell a story”, is a very interesting essay in which Mark Twain, reveals that the differences between the humorous story and the comic or witty story lie primarily in the techniques used by their tellers. He describes his own writing style, attacks the idiocy of a fellow author, defends the virtue of a dead woman, and tries to protect ordinary citizens from insults by railroad conductors.





LITERARY ELEMENTS

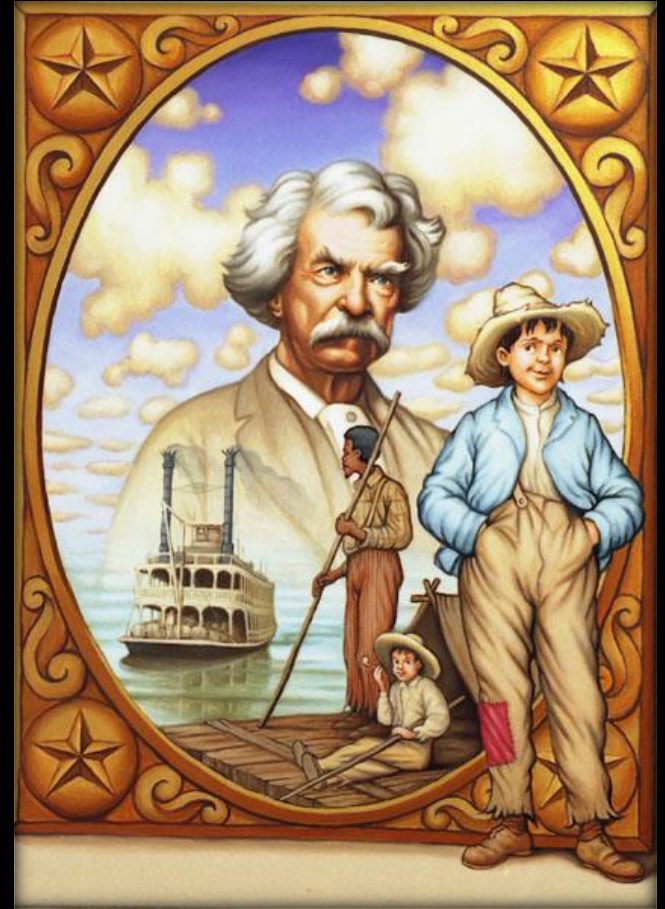
Dialect

Is a version of a language spoken by the people of a particular place, time, or social group.

Frame Tale

Refers to a story that provides a vehicle for the telling of other stories. It's a story within a story. Think, "Frankenstein" or "The Thousand and One Nights".

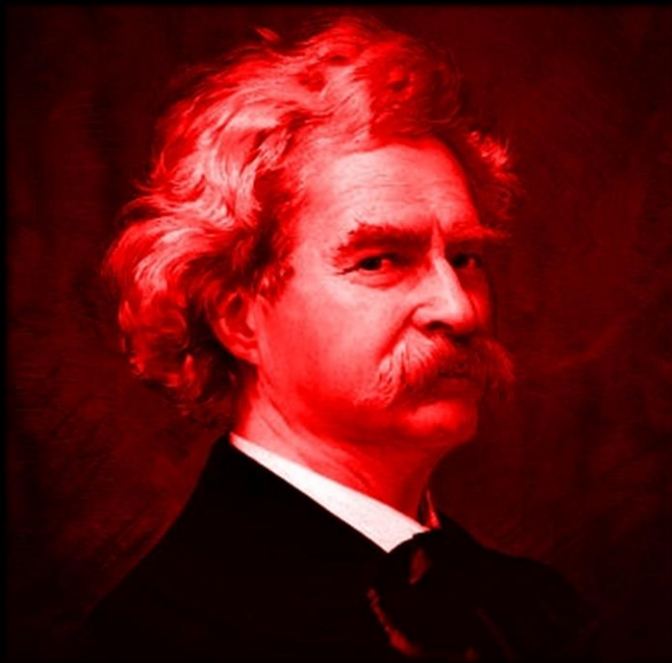
Mark Twain can be seen as one of the writers of local color and regional literature during his time. His evocation of the Mississippi River make him part of the regionalism movement that was important as realism emerged as a literary period. Twain believed that society should abolish slavery, gain morals, and become more civilized. Twain uses regionalism to critique an implication by using a person, place, or era. Twain's "Adventures of Huckleberry Finn" is an example of regionalism.



ASSESSMENT

After reading pages 247-257 in your book, complete the activities:

1. REFER TO TEXT &
2. REASON WITH TEXT
3. & ANALYZE LITERATURE
 - **Dialect and Frame Tale** - Twain's use of a regional dialect adds color and interest to his story. How do Simon Wheeler and the narrator use English differently? How does Twain use language to characterize Wheeler and the narrator?
 - What is the frame tale in this story? Analyze the impact of the narration when the narrator's point of view shifts from one character to another. What is Simon Wheeler's attitude toward his story about Jim Smiley? What is the frame narrator's attitude toward Wheeler's story? How does the attitude of the frame narrator affect the story as a whole?



Jim Soto © 2022